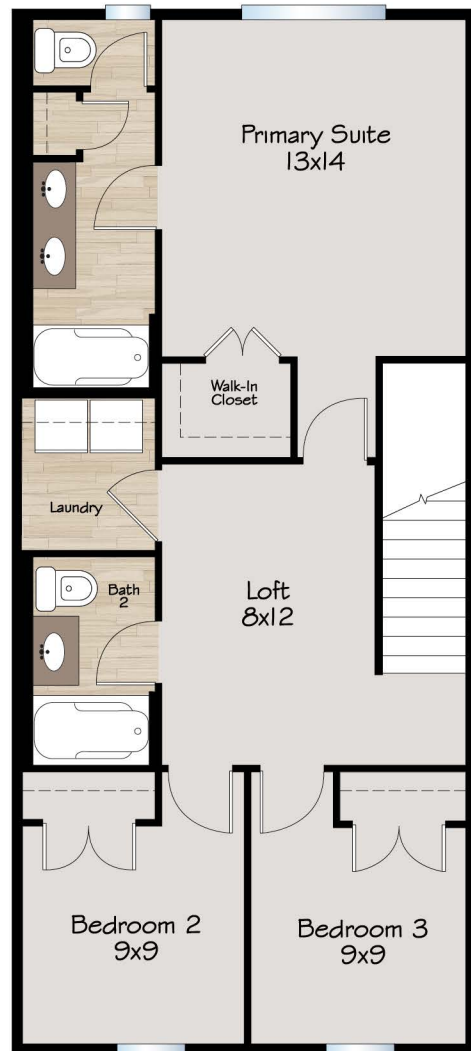
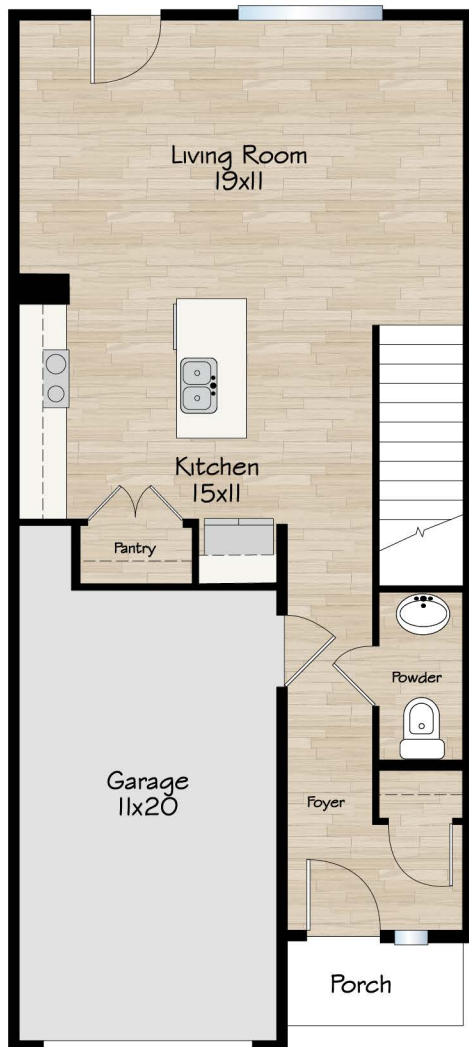


THE LILY

3 BED | 2.5 BATH
1471 SQUARE FOOT

MAIN FLOOR: 625 SF
SECOND FLOOR: 846 SF



DISCLAIMER FOR ALL ELEVATIONS & FLOOR PLANS

*Denotes base square footage. If a home plan is built in multiple communities, the standards, elevations, and floor plans may differ by community. See community booklets for specific details. All square footage and dimensions are approximate and subject to change with some plan changes. All elevations and floor plans are artistic representations and do not always reflect standard materials or styles. Turner Homes reserves the right to make substitutions, change prices, products, & specifications without notice or obligation.



turnerhomes.com