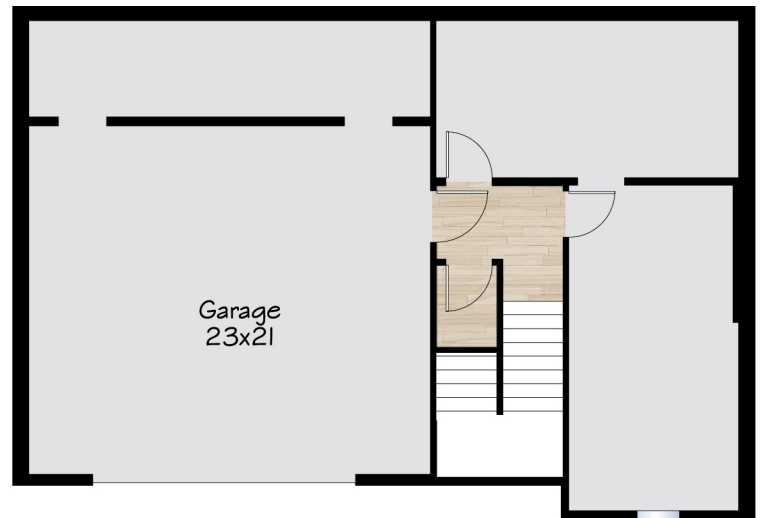
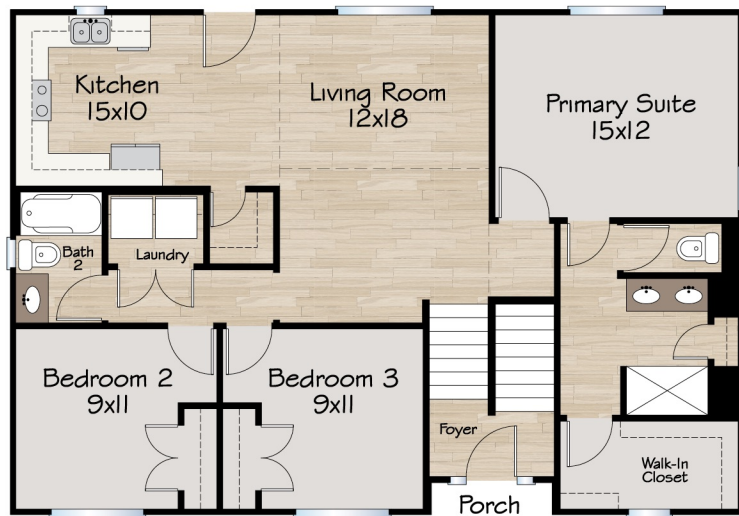


THE GOLDENROD

3 BED | 2 BATH
1517 SQUARE FOOT

MAIN FLOOR: 138 SF
SECOND FLOOR: 1379 SF



CLOVER
RIDGE

DISCLAIMER FOR ALL ELEVATIONS & FLOOR PLANS

*Denotes base square footage. All square footage and dimensions are approximate and subject to change with some plan changes. All elevations and floor plans are artistic representations and do not always reflect standard materials or styles. Turner Homes, LLC reserves the right to make substitutions, change prices, products, & specifications without notice or obligation.

TURNER
HOMES

turnerhomes.com